



4th Bi-Annual International

**EUROPEAN WOMEN INVENTORS
& INNOVATORS NETWORK**

EXHIBITION, CONFERENCE & AWARDS CEREMONY



*Accelerating Growth in Product and Service
Innovation in Europe and Beyond For Significant
Economic Growth and Social Impact*

27 - 28 November 2013

The Tekniska Museet
Stockholm, Sweden

27 November 2013

Conference & Exhibition, Tekniska Museet
Evening Reception, Stockholm City Hall

28 November 2013

Conference & Exhibition, Tekniska Museet
Business Match Making, Tekniska Museet
The Award Ceremony, Sheraton Hotel, Stockholm

** This agenda may be subject to change due to circumstances beyond our control. Due to a limited budget the main language at the event shall be English.*

“On behalf of the Global Women Inventors & Innovators Network (GWIIN) and QSAVE Sweden, it gives us great pleasure to welcome you all to another fascinating international EUWIIN Conference & Awards. Please take advantage of the opportunity to network and the benefits that can be derived from this event in relation to the social and economic empowerment of women and the fast-tracking of skills development and knowledge transfer. Special attention has been given to intellectual property rights, access to finance, product development, manufacturing, equity and commercialization, international trade and all aspects covering the successful exploitation of viable innovative ideas.”

Dr Bola Olabisi

*Founder & Director, European Union Women Inventors & Innovators Network (EUWIIN)
& Global Women Inventors & Innovators Network (GWIIN), United Kingdom*

Local Planning Steering Group

Ms Åsa Magnusson

EUWIIN Event 2013 Country Co-Organiser and Director QSAVE Sweden

Ms Ann Dohse

Founder, Svenskt Uppfinnare Museum

Ms Elinora Inga Sigurdardottir

President, KVENN, Iceland

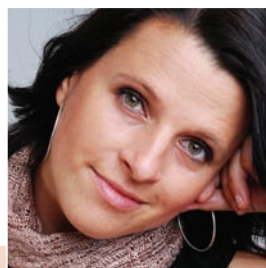
Event Hostesses 2013

Moderators



ANGELA WADE

**Principal Coordinator
for Events, Global
Women Inventors &
Innovators Network
(GWIIN)
United Kingdom**



KARIN NILSSON

**International Policy
Adviser, RFSU- IPPF
Sweden**

The EUWIIN Judging Panel

Under the chairmanship of Ms Diane Morris

Immediate Past President of the International Alliance for Women (TIAW)

Dr Eva Samuelsson

Director of Aurum Consulting Ltd with focus on enhancing supplier-customer value and business process improvement, United Kingdom

Mr Julius Valsson

Rheumatologist Medical Practitioner, Board Member Icelandic Inventors and Innovators Association, Iceland

Mr Orjan Strandberg

Chairman STIK- Stockholms Innovatörskrets and Board member, SUF Svenska Uppfinnareföreningen, Sweden

Ms Raffaella Di Sante

Faculty Member of Mechanical and Thermal Measurements at University of Bologna, Italy

Ms Vivvi Jokk

QUIN, Estonia

Ms Kristina Kallur

Kväsig AB Entrepreneur & Project Management For Innovative SME's, Sweden

Engr. Abu Ozigi

Director (Technology, Innovation & Infrastructure) Small And Medium Enterprises Development Agency Of Nigeria (SMEDAN) Abuja, Nigeria

Judging Facilitator

Ms Fisayo Olabisi, Post Graduate Student, Medical Engineering, Queen Mary University, United Kingdom

CONFERENCE AGENDA WEDNESDAY, 27 NOVEMBER 2013

10H00 - 10H30 ARRIVALS / REGISTRATION / TEA / COFFEE
10H15 - 11H00 INTRODUCTION & OPENING CEREMONY

WELCOME ADDRESS

MR NILS OLANDER, Curator, The Tekniska Museet, Stockholm, Sweden

PURPOSE & INTRODUCTION

DR BOLA OLABISI, Director, European Women Inventors & Innovators Network (EUWIIN) International & CEO, Global Women Inventors & Innovators Network (GWIIN)

SPECIAL GUEST SPEAKERS ADDRESS

HON MARIA ARNHOLM, Minister For Gender Equality & Deputy Minister For Education (TBC)

HON PROF VIOLA A. ONWULIRI, Minister of State of Foreign Affairs, Nigeria

HON MARGARETA CEDERFELT MP, Sweden

MS JENNY GARDNER, Director of UK Trade & Investment, British Embassy Sweden

11H00 - 11H30: SPECIAL ADDRESS

MR GIUSEPPE RUOTOLO, European Commission DG Innovation & Research, Brussels, Belgium

11H30 - 11H50 MORNING TEA BREAK

11H50 - 12H20 INVENTOR CASE STUDIES: SETTING THE SCENE

MS ASA MAGNUSSON 2011 EUWIIN Overall Award Winner & Inventor Of Quicksave Sweden

MS. EPP SONGISEPP, Senior Researcher & Inventor, Bio-Competence Centre Of Healthy Dairy Products Llc, Estonia

12H20 - 13H20 PLENARY SESSION ONE DRIVING INNOVATION & ENTERPRISE IN THE ECONOMY

MS GUNILLA THORSTENSSON, Programansvarig, Främja Kvinnors Företagande, Tillväxtverket, Sweden

MS ELLEN CORKE, Open Innovation Director, Oral Health, Research & Development, GlaxoSmithkline, United Kingdom

DR ANDREAS UHMEIER, ALMI Sweden

Q&A

13H20 - 14H20 LUNCH BREAK & TOUR OF THE MUSEUM

14H20 - 14H45: IMPORTANCE OF INTELLECTUAL PROPERTY RIGHTS IN ACCELERATING GROWTH

MS CECILIA FRÖDERBERG, Project Manager, Swedish Patent And Registration Office (PRV)

14H45 - 15H30: SOCIAL AND ECONOMIC EMPOWERMENT OF WOMEN IN RELATION TO SCIENCE AND INNOVATION

MS INGRID THURESSON & DR ANN-CHRISTIN NYBERG, Women In Science, Engineering & Technology (WITEC)

DR. MIKAEL ALLAN MIKAELSSON, Science and Innovation Officer, British Embassy Stockholm

15H30 - 16H20 ANGELS CORNER - PITCHING FOR SUCCESS

INTERACTIVE SESSION WITH INVENTORS & INNOVATORS PRESENTING THEIR PRODUCTS TO A PANEL OF SPECIALISTS FOR SOME FRANK PROGRESSIVE FEEDBACK - This is NOT the Judging Panel.

SPECIALIST PANEL

CHAIR: DR JOANNE WHITAKER, Head Of Intellectual Property Commercialisation, Loughborough University, United Kingdom

MS AMY GESCHKE, Director, Consumer Health Care Nutrition, GlaxoSmithkline

MS ANNE-MARI RANNAMÄE, President, QUIN Estonia

MR ADEBAYO JONES, Image & Sustainable Design Consultant, United Kingdom

MS LUNA SHAMSUDDOHA, Chairman, DOHATEC, Bangladesh

MS MAGARET WOOD, Managing Director, ICW Ltd, United Kingdom

MS MAILA HAKALA, President, QUIN Finland

16H20 - 16H30 MATCH MAKING CLARIFIED - ENTERPRISE EUROPÉ NETWORK 16H30 CLOSE

WEDNESDAY, 27 NOVEMBER 2013
19H00 - 20H30
EVENING RECEPTION
CITY HALL OF STOCKHOLM

CONFERENCE AGENDA THURSDAY, 28 NOVEMBER 2013

10H00 - 10H15 ARRIVALS & TEA / COFFEE

10H00 - 16H00 * FRINGE EVENT
ONE TO ONE MATCH-MAKING PROGRAMME OPPORTUNITY,
ENTERPRISE EUROPÉ NETWORK

10H15 - 10H30 CROWD FUNDING AS AN INVESTMENT OPPORTUNITY
MS SUSAN SJÖLUND, CMO, FUNDEDBYME + EQUITY

*EUROPE & EMERGING NEW MARKETS

11H00 - 12H00 EURO-AFRICA ROUNDTABLE FOR INNOVATION & ENTERPRISE - A LOOK AT NIGERIA

MS SARAH A. PANE, Special Adviser to The President of Nigeria (on Social Development & Special Duties)

DR NGOZI JULIET OLEJEME, Nigeria Social Insurance Fund (NSITF)

ENGR. ABU OZIGI, Director (Technology, Innovation & Infrastructure) Small and Medium Enterprises Development Agency Of Nigeria (SMEDAN) Abuja, Nigeria

12H00 - 13H00 LUNCH BREAK & TOUR OF THE MUSEUM

13H00 - 13H30 INNOVATION TECHNIQUES FOR ECONOMIC GROWTH

MR KAJ MICKOS, Professor Emeritus In Innovation Techniques, Sweden

13H30 - 15H00 FOCUS ON INTERNATIONAL MARKET & PARTNERSHIP OPPORTUNITIES

MS MILENA CVIJANOVICH, Sustainable Innovation, MCM Design Studio, Switzerland

MR KJELL HEDBERG, Stockholm Innovations Association (STIK) Sweden

MS ELINORA INGA SIGURDARDOTTIR, President, KVENN Iceland

MS LUNA SHAMSUDDOHA, Chairman, DOHATEC, Bangladesh

MS GIA GASPARD TAYLOR, President, Network Rural Women Producers, Trinidad & Tobago

15H00 - 15H30 CONNECT SWEDEN HIGHLIGHT INVESTMENT SOLUTIONS

15H30 - 16H30 FINAL TOUR OF THE MUSEUM

16H30 CLOSE

THURSDAY, 28 NOVEMBER 2013,
19H00 -21H30
AWARDS EVENING DINNER CEREMONY

19H00 - 21H30 EUWIIN INTERNATIONAL AWARD DINNER & CEREMONY
SPECIAL GUEST

HON ANNA MARIA CORAZZA BILDIT, Sweden, MEP

Including

SUSTAINABILITY ECO-FRIENDLY FASHION (SEFF) SHOW

CHOREOGRAPHY: MR ADEBAYO JONES, Image & Sustainable Design Consultant

TILLVÄXT VERKET

SWEDISH AGENCY FOR ECONOMIC AND REGIONAL GROWTH



ADEBAYO JONES

FACE
STOCKHOLM

WOMEN'S
ENTREPRENEURSHIP
STRENGTHENS
SWEDEN



SUSTAINABLE ECO-FASHION SHOW
CHOREOGRAPHY BY ADEBAYO JONES



GWIIN, 35 Kingsland Road
London E2 8AA, United Kingdom
Tel: +44 2082205184
office@zwiin.com www.zwiin.com

We have sought to ensure that all information has been obtained from reliable sources. However, the accuracy and completeness of any information provided cannot be guaranteed, and we accept no responsibility for any errors or omissions or any consequences arising from its use.

EUWIIN* is a part of GWIIN* - Copyright © 2013
GLOBAL WOMEN INVENTORS & INNOVATORS NETWORK. All rights reserved.